



DIGITAL COMMAND CONTROL (DCC) KITS

Electronic Kits available to MERG members only

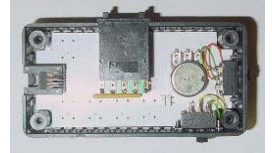
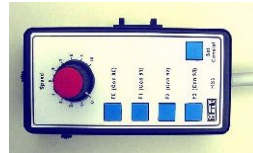


**DCC Command Station/Booster
Kit 42**

A 5-amp combined DCC Command Station and Booster which supports up to 8 tethered MERG Handsets (Handsets bought separately - see below)

DCC Handset Kit 43

Handset for use with the MERG Command Station/Booster.
Handset cables available separately in 1m, 1.5m and 2m lengths



DCC Programmer Kit 41

A mains-powered stand-alone unit for programming DCC locomotive and Accessory Decoders. Fully NMRA compliant

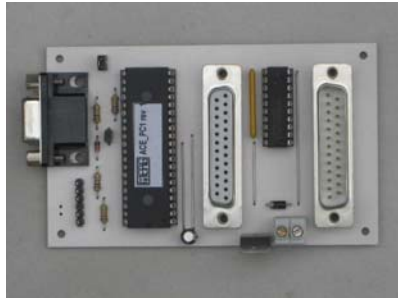


SPROG 1 KIT 50
(RS232 or USB)

A DCC programmer interface for use with an IBM PC to program DCC decoders. Employs simple commands with a PC Terminal Emulator or can be used with DecoderPro. Powered from a 12vac or 15vdc supply. USB version shown.

**DCC Accessory Encoder
Kit 51**

A unit to interface up to 128 Mimic panel SPDT toggle switches to a standard DCC output signal. Used to drive DCC Accessory Decoders in an independent system so that track short circuits do not prevent turnout switching.

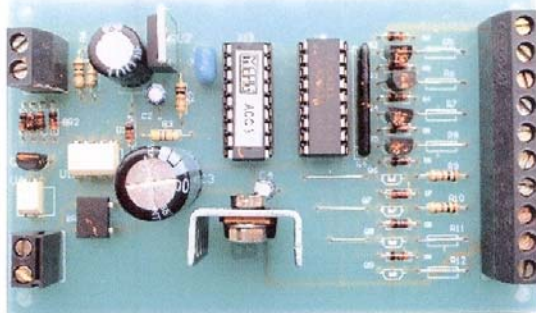


Encoder PC Interface Kit 54

An interface board to connect the serial port of an IBM PC to the MERG DCC Accessory Encoder. Fully NMRA compliant

**DCC Accessory Decoder (Pulse)
Kit 52**

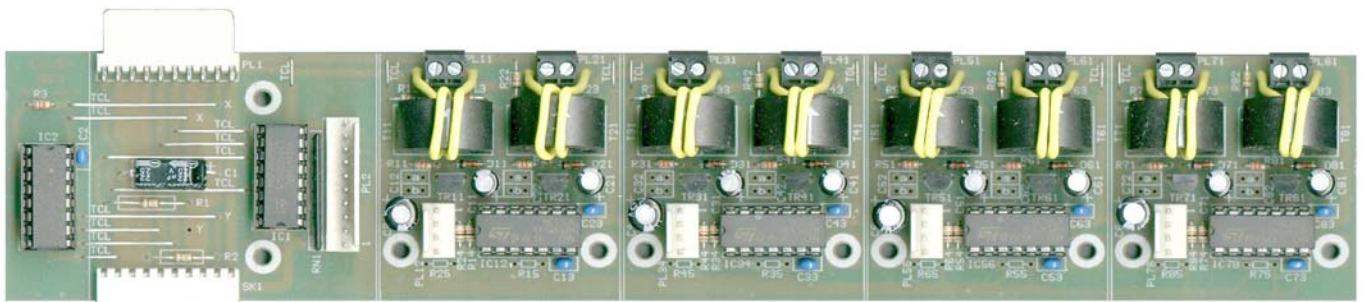
A DCC decoder unit to drive up to 4 toggled Pulsed Outputs suitable for driving twin coil point motors. Fully NMRA Compliant. Also available in 5 kit Multipacks 52M



**DCC Accessory Decoder (Steady State)
Kit 53**

A DCC decoder unit to drive up to 4 pairs of toggled or 8 on-off Steady State Outputs suitable for driving Tortoise and Switchmaster Point Machines and colour light signals. Fully NMRA compliant

Steady State Decoder Add-on Kit 55 An additional component kit to increase the current output of the DCC Steady State Accessory Decoder for driving Lemaco and Fulgurex Point Machines



DCC Train Detector (DTC-8) Kit 56

An 8-block DCC Train Detector which employs a current transformer to detect traction current drawn by a train in section. Includes an RPC interface

Also available - FRIBURG BOOKS - Books 1 - 6 by Rutger Friberg featuring the use of electronics as applied to Model Railways and the popular DCC book by Ames, Loiseaux & Friberg

BABANI BOOKS - A selection of titles from the Babani range dealing with the use of a variety of electronic components and test equipment

COMPONENTS - BT47 Relays, Varley Relays, Track and PCB Cleaner, Reed Switches and Coils, Hall Effect Switches, a variety of Magnets, a variety of super Bright and Golden LEDs, Filament Lamps, and surplus components from Kit Production such as diodes, transistors, ICs, PICs and hardware. Technical Support available from a Yahoo Group, kit designers and much, much more besides.

SEE ALSO THE DC KITS RANGE LEAFLET AND RPC Kits.